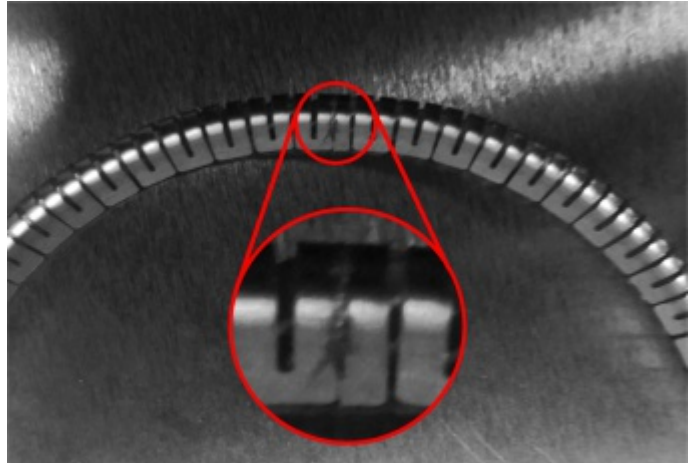


## Laser Welding Systems for Springs\*

In Laser welding, the parts are heated and melted in a small welding spot by controlling current, frequency and pulse of the Laser beam. The result is a neat and narrow weld seam.

### General Specifications

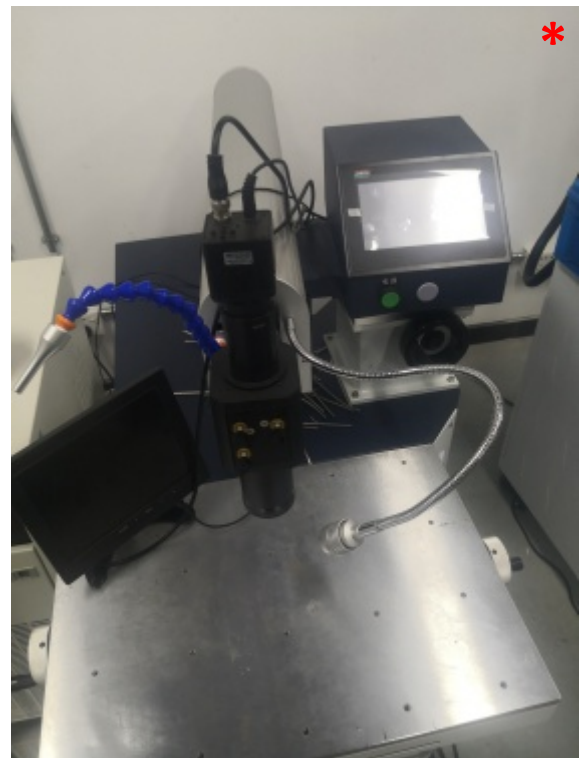
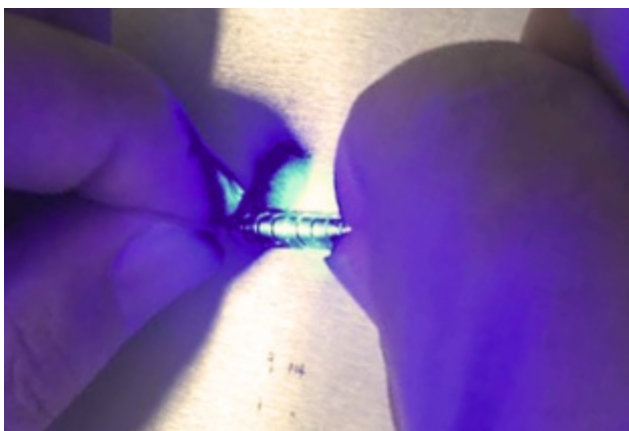
- Nd3+YAG solid-state Laser
- Weld depth 0.1-4.0mm
- Weld width: 0.2-0.8mm
- Pulse duration: 0.5-20ms
- Wave length: 1.06 $\mu$ m
- Working area: 200\*300mm
- Max load: 100kg
- Cooling method: Water cooler



### Specifications per Model

	<u>HY-WM200W</u>	<u>HY-WM400W</u>
• Max power [W]:	200	400
• Max. energy of single pulse [J]:	90	110
• Weld frequency [Hz]:	$\leq 50$	$\leq 200$
• Total power [kW]:	6	8

Please inquire for more information!



*\*Due to differing Occupational Safety & Health Regulations, these systems may not be available in all countries.*

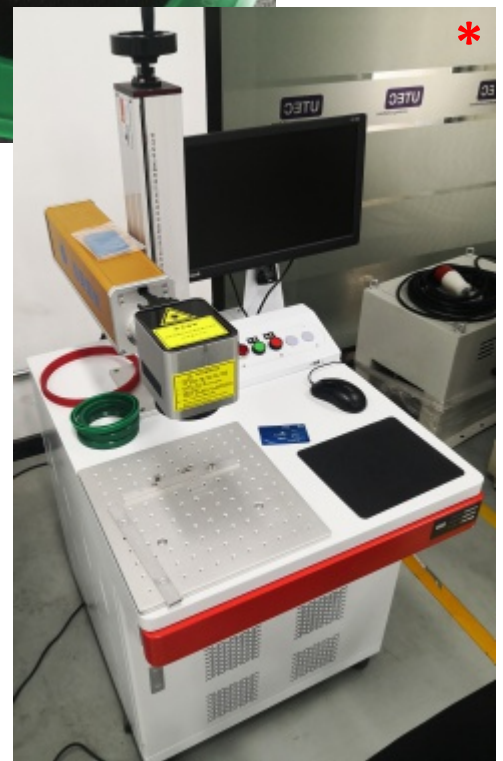
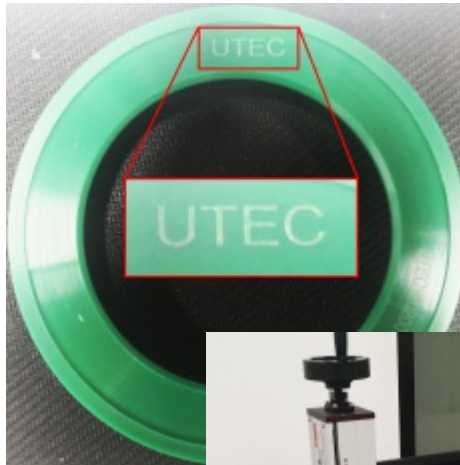
# Laser Engraving Systems\*

Laser engraving is a fast, reliable and long lasting way to write serial numbers, company names, bar codes etc onto almost any surface. The engraver comes with a piece of software to allow almost any kind of durable engraving.

## Specifications

- Line width: 0.01-0.04mm
- Marking depth: ≤0.3mm
- Speed: 5,000-7,000mm/s
- Wave length: 1.06μm
- Working area: 110\*110mm
- Input file types: AI, DXF, DWG, PLT, BMP, JPG etc
- Repeatability Accuracy: ±0.002mm
- Average Output Power/Version:
  - FB-20W ..... 20W
  - FB-30W ..... 30W
  - FB-50W ..... 50W
  - FB-60W ..... 60W
  - FB-100W ..... 100W
- Optional Marking Areas:
  - 70\*70mm
  - 300\*300mm
- Total Power Consumption: 500W

Please inquire for more information!



*\*Due to differing Occupational Safety & Health Regulations, these systems may not be available in all countries.*



**UTEC Sealing Solutions Co., Ltd.**  
No. 25 JiangTianli Rd., South JiePu Rd., SIP  
215126 Suzhou, P.R. China

ZH | EN | KO | RU – alan.wang@utec.cc  
DE | EN | ES | FR | PT – tom.pohl@utec.cc

